

DS Durable Surfaces

Repair | Technical | Coatings

THE CONCRETE AUTHORITY

Since 2001, Durable Surfaces has been actively engaged in the testing of concrete slabs. We own all the hardware and are one of the few contractors certified in testing FF/FL and Fmin. Our unique skillset is that we understand the testing, can walk clients through the results and can perform the recommended corrective grinding solutions. Our field experience over the past 20 years in testing & surveying, along with our experience in advanced robotic field remediation, curvature grinding, and superflat requirements, separates Durable Surfaces in the industry. We take pride in providing highly technical solutions to our partners. Durable Surfaces is **The Concrete Authority**.

CLIENTS

FreezPak
LOGISTICS

NFI

RAYMOND

MSC

WILLIAMS SONOMA
CALIFORNIA

amazon

TECHNICAL SERVICES

Fmin Testing

Corrective Grinding

Ff / Fl

Wire Guide Install

Slab Assessment

Technical Consulting

Laser Scanning

Robotic Fields

RFID Tag Install

Safety Slow Down Systems

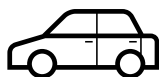
INDUSTRIES WE SERVE



PHARMACEUTICAL



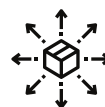
FOOD &
BEVERAGE



AUTOMOTIVE



COLD
STORAGE



DISTRIBUTION
& LOGISTICS



OIL & GAS



INDUSTRIAL &
COMMERCIAL



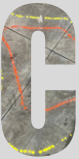
TESTING

A unique outlier that sets us apart from our competition, is our decades worth of **testing** capabilities that provide complete and precise data.



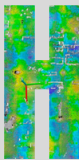
ENGINEERING

Engineering plays a big role in our technical services, as we aid in maintaining your slab tolerance while adhering to your specifications for budget and timeline.



CONSULTANT

Our decades worth of field experience, while also coming highly recommended by KCI Technologies, has made us the number 1 **consultant** in our industry.



HEAT MAP

Our team uses **heat map** technology to produce a visualization of a floors flatness, using data points, with highlighted areas that need to be corrected.



NATIONWIDE

We have grown from servicing just our local market, to now servicing those **nationwide**. This allowed for regional offices to open to aid in our clients' needs.



IMPACT

Our technical services make an **impact** on production calculations, case pick rates, and even safety risks. These things can cost you thousands if not maintained.



CONCRETE TECHNOLOGY

Since 2001, we have been actively engaged in **concrete technology** and take pride in providing highly technical solutions to our partners for long-term success.



AUTOMATION

We are at the forefront in tackling concrete **automation** & the future of robotics, working with the nations' number 1 retail giant on their AR fields.



LEADER

We've become the industry **leader** in repair, coatings, and technical services, providing the highest quality possible, backed by years of experience.

FF / FL

Ff / Fl stands for Floor flatness & Floor levelness which is determined in random traffic areas. Flatness is how bumpy or smooth a slab is while levelness is the average change in elevation over a longer distance. This is critical to robotic fields & its ability to operate at peak performance.

WIRE GUIDE INSTALL

Wire guidance is for VNA trucks and AGV systems. For a safe and durable system, you need to make sure you have proper wire alignment, consistent depth, and wheel path flatness. These items play a role in reducing safety risks and operator injury.

SLAB ASSESSMENT

This is an evaluation of your floor using industry approved equipment that collects data through measurements, readings, and pictures. We use this data to establish a baseline understanding of the current state of your floor slab. It then becomes a blueprint for planning preventative maintenance towards your biggest asset - your concrete floor.

FMIN TESTING

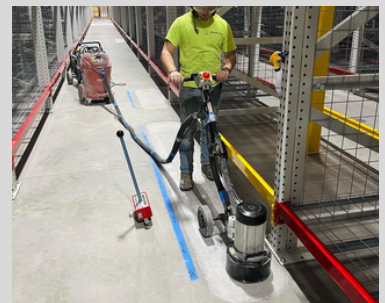
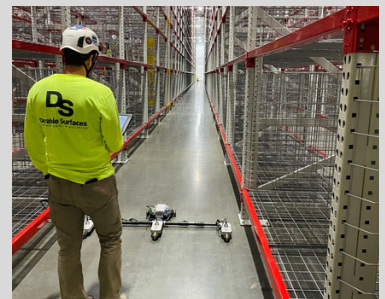
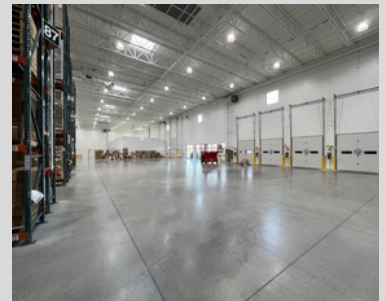
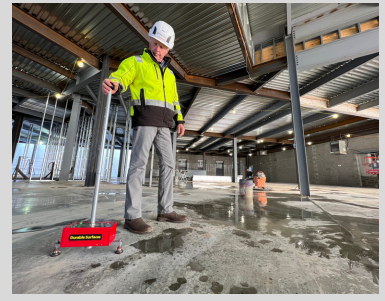
Fmin testing is used to define the least acceptable flatness & levelness conditions in a defined aisle of traffic. This testing is particularly performed in VNA (Very Narrow Aisle-ways) to control wheel track profiles. The data collected will provide the baseline for correcting the issue.

CORRECTIVE GRINDING

After testing is completed, we offer a wide array of grinding and remediate services to get your floor into compliance. Durable Surfaces crews are trained to effectively work in any condition whether its a new construction warehouse or an expansion to an operating facility.

LASER SCANNING

Today's robotics are very susceptible to floor issues in order to operate efficiently. Our floor scanning service produces a colorized elevation map and allows us to collect precise data - before, during, & even after a project - to aid in decision making. All datum is collected to provide the proper corrective services.



CHESTER SPRINGS, PA

BRIDGEWATER, NJ

HARRISBURG, PA